



DELHI DEVELOPMENT AUTHORITY

दिल्ली विकास प्राधिकरण

DETAIL OF O.C.F.

SECTOR POPULATION - 8300
 AREA OF THE SCHEME - 7436.0 SQM

DETAIL OF FACILITIES:-

S. NO.	FACILITIES	REQUIRED AS MPD - 2001	PROPOSED	AREA IN (SQ. M)
1	UTILITY/FACILITY CENTRE	-	1	2093.0
2	COMMUNITY HALL / LIB.	1	1	1892.0
3	DISPENSARY	1	1	1115.0
4	RELIGIOUS	2	ONE EXISTING	1070.0
5	E.S.S.	AS REQUIREMENT	1	297.0
6	VACANT PLOTS (2 NOS.) (INSTITUTIONAL)	-	2	465.504 = 965.0

NOTE:-

- UTILITY/FACILITY CENTRE WAS APPROVED IN 70th SCREENING COMMITTEE MEETING ON 4.2.91. ONE PHASE OF UTILITY CENTRE HAS BEEN ACCOMMODATED.
- THE SCHEME HAS BEEN DISCUSSED WITH CE (N.Z.) ON DT. 16.4.96 AND APPROVED.
- ALL DIMENSIONS ARE IN METRES.
- DRAWING NOT TO BE SCALED OUT. ONLY WRITTEN DIMENSIONS ARE TO BE FOLLOWED.
- ALL DEVELOPMENT CONTROLS WILL BE AS PER MPD-2001.
- ALL PLOTS SHOULD BE CLEAR OF ANY STRUCTURE BEFORE ALLOTMENT.
- CHANGES INCORPORATED IN THE DRG. AS PER THE FEASIBILITY.
- FEASIBILITY RECEIVED VIDE LETTER NO. AE (P) 7-A/ND-4/DDA/95-96/1230 dated 30.11.96.

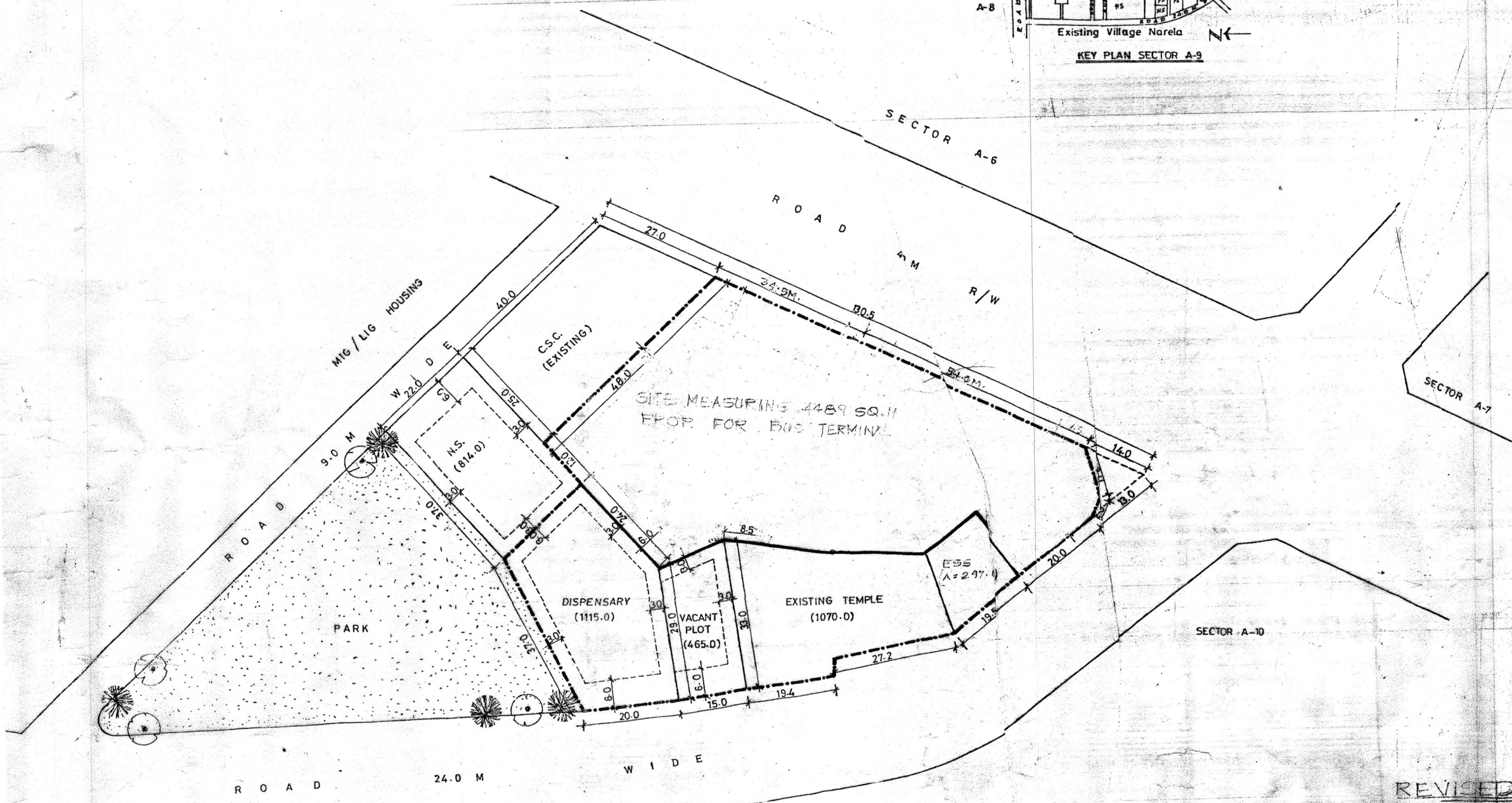
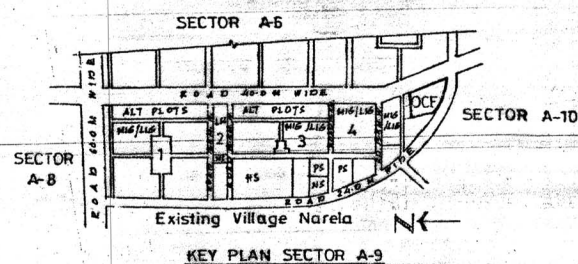
361

APPROVED BY VC, DDA ON 11.9.96 IN FILE NO. DIR/NP/93/102/PT II AT PAGE NO. 2/11

PROPOSED LAY OUT PLAN OF OTHER COMMUNITY FACILITIES POCKET-4 SECTOR-A 9 NARELA PH.1/1.

Scale माप 1:500	Date दिनांक APRIL-96
Drawn by डिजाइनर	Asstt. Dir. सहायक निरीक्षक
dy. director उपनिदेशक	Project planner परियोजना निरीक्षक

NARELA PROJECT
 नरेला परियोजना



NOTE:-

- THE MODIFIED LAY OUT PLAN ALONG WITH THE SITE FOR D.C. TERMINAL MEASURING 4489 SQM. HAS BEEN APPROVED VIDE COMM. (PLG.) ON 14.8.2001, AT PAGE-12/N IN FILE NO. F-15(104) 2000/NP.
- SITE MEASURING 4489 SQM. APPROVED FOR THE ALLOTMENT TO D.T.C. TERMINAL VIDE COMM. (PLG.) ORDER'S DATED 14.8.2001, AT PAGE NN, IN FILE NO. F-15(104) 2000/NP.

REVISED LAY OUT PLAN
 NOTE

- LAY OUT PLAN HAS BEEN REVISED AS PER SITE CONDITIONS APPROVED BY THE COMM. (PLG.) ON 16.11.2001 AT PAGE 11/N IN FILE NO. F-15(104) 2000-DIR/...
- SITE MEASURING 4489 SQM. HAS BEEN APPROVED BY THE VC, DDA ON 11.9.96 IN FILE NO. DIR/NP/93/102/PT II AT PAGE NO. 2/11